

InterRisk Thailand Flood Report <2022 No.02>

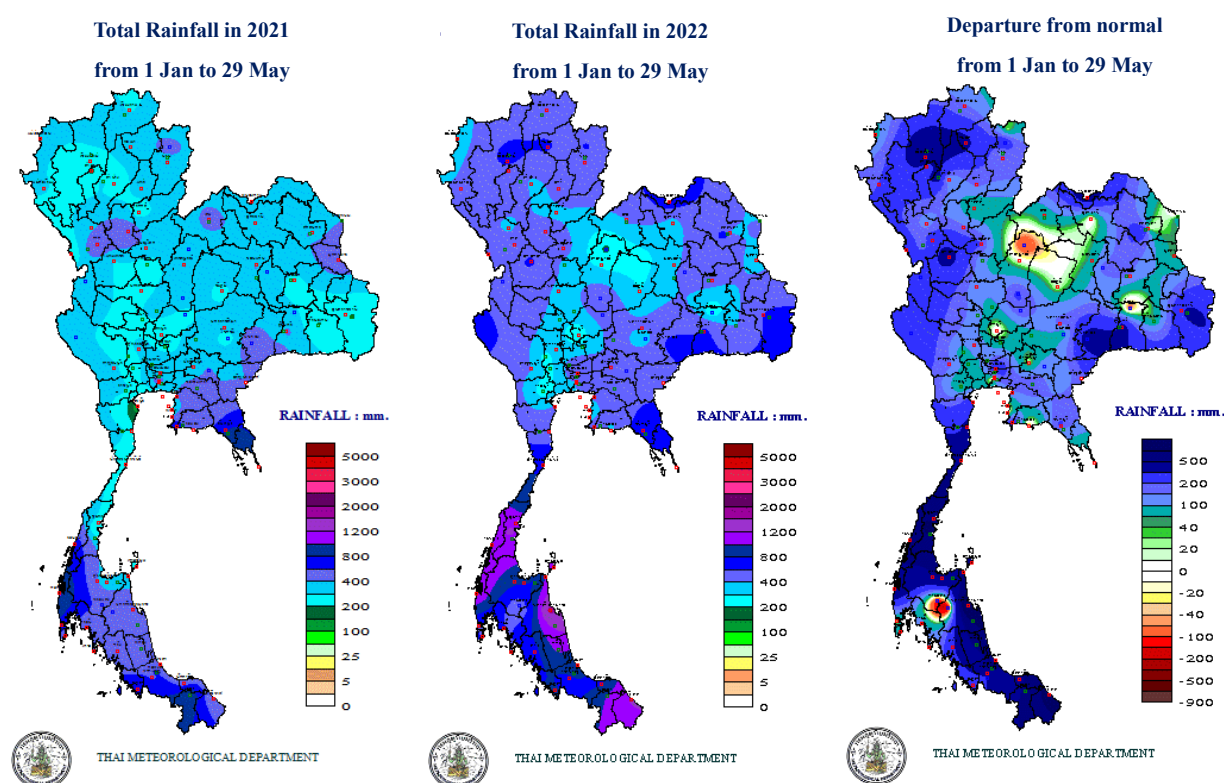
Thailand current water situation

[Summary]

- The rainfall amount from the end of May is substantially higher than last year, especially in the south.
- In the first half of June, there will be heavy rain in many areas, especially eastern and southwest regions.
- In the second half of June, rain will decrease due to weakening of the southwest monsoon.
- The storage levels in all major dams of the Chao Phraya Basin are slightly higher than the beginning of May due to arriving of rainy season. And, the storage levels are mostly relatively higher than last year.
- The river levels of Yom river (upper Chao Phraya River) are clearly higher than the beginning of May. However, the overall river levels of both upper and lower Chao Phraya River are still normal to low. There is no concern about flood.

Precipitation

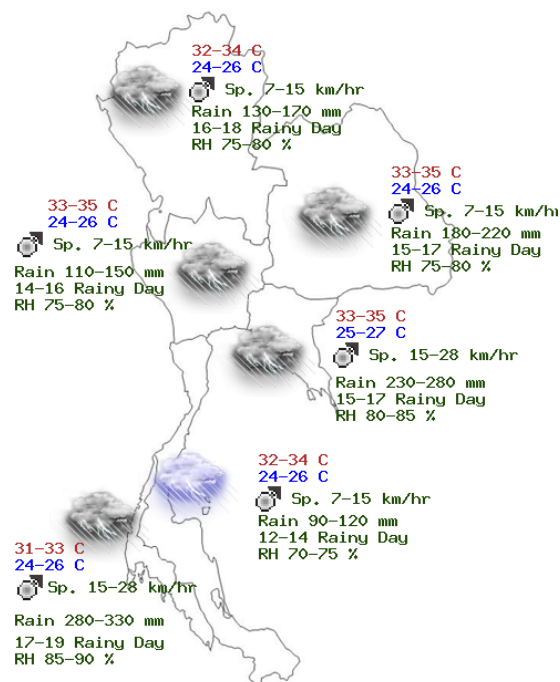
The precipitation until the end of May comparing to last year is substantially higher, especially in the south of country. The accumulated rainfall in overall country is in the range of 200-1200 mm which is the effect from La Nina. If comparing to the average rainfall value, this year's accumulated rainfall is significantly higher, especially in the northern and southern regions.



Note: Normal value is the average rainfall amount within the period of 30 years (1981-2010)

Forecast

According to the monthly weather forecast from the Thai Meteorological Department change to, the weather will be continually rainy in the first half of June, approximately 40-60 percent of the area, there will be heavy rain on some days in some areas. For the eastern and southwest regions, rain will increase to be approximately 60-80 percent of the area, there will be rain in many areas and be heavy rain in some areas. Afterwards, the quantity and dispersion of rainfall will decrease in the second half of the month. These are the consequence of the transition from weakening of the southwest monsoon that covered the country in the first half of the month. In addition, there will be monsoon trough that will periodically lay along the northern and northeast regions. And, the monsoon trough will lay along the southern region of China in the second half of the month.



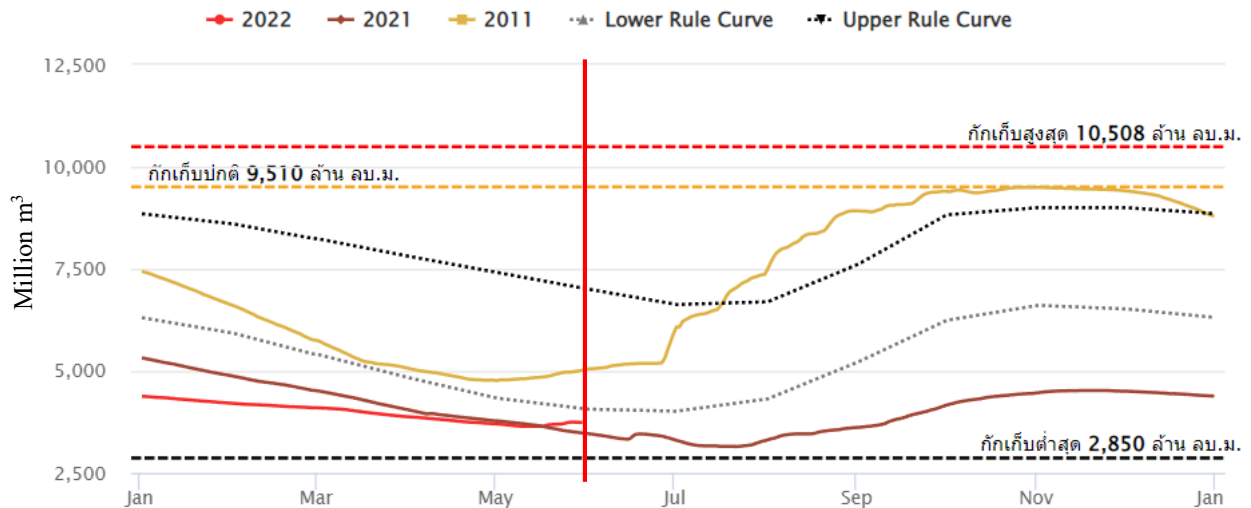
For the precipitation forecast in June, the total rainfall of upper country will be approximate to the normal value while the total rainfall of southern region will be approximately 10 percent lower the normal value.

Caution in June, there will be tropical storms usually formed in the western region of North Pacific Ocean, and moved thru the Philippines into the South China Sea. Thus, the southwest monsoon that has covered the Andaman sea and the country will be stronger, as a result, rain will be increased, especially southwest region and eastern region coasts.

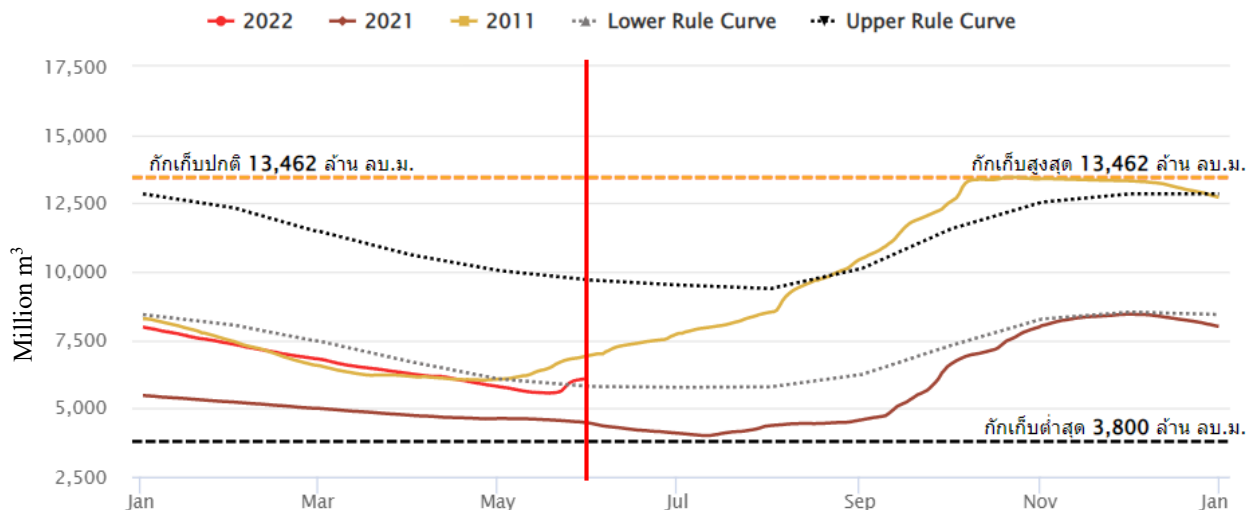
Note: Normal value is the average rainfall amount within the period of 30 years (1981-2010)

Dam Storage Level (Sirikit Dam, Bhumibol Dam)

Storage level Sirikit Dam (39%) 29 May 2022



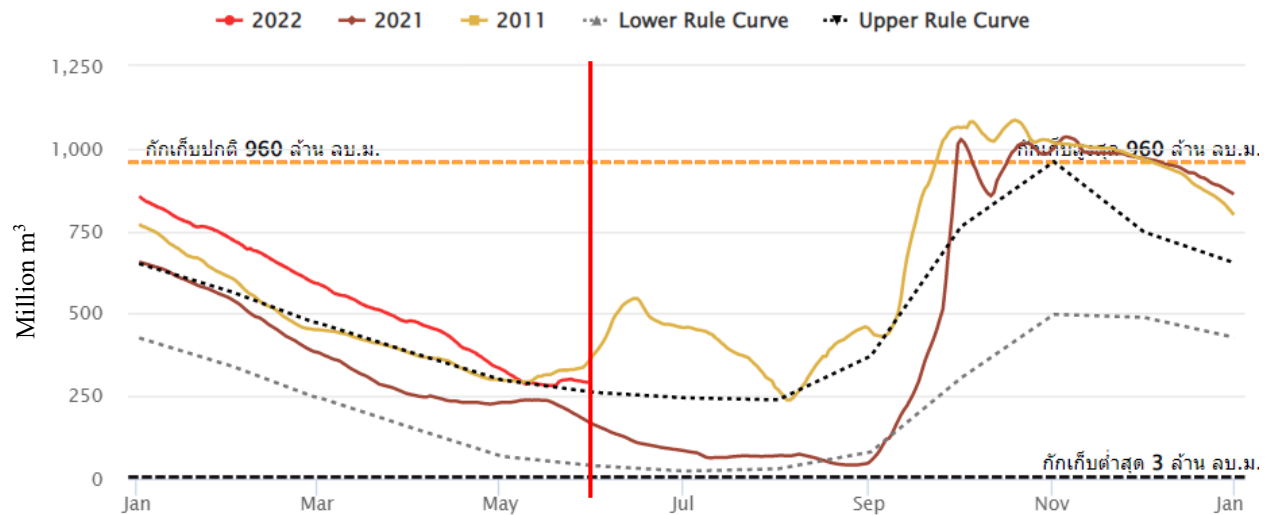
Storage level Bhumibol Dam (45%) 29 May 2022



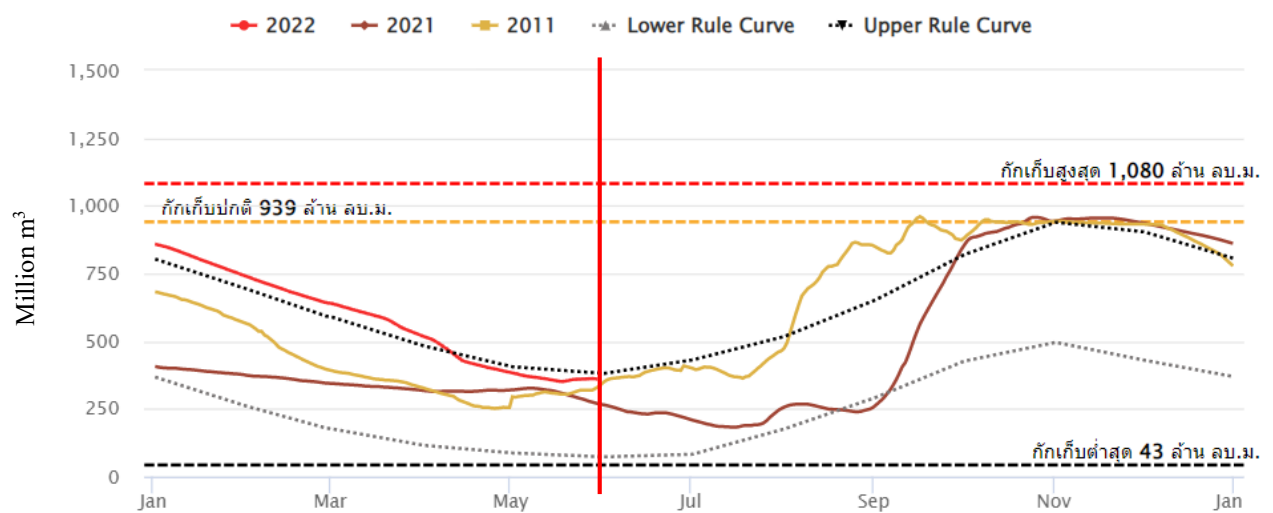
The storage level of Sirikit Dam until May 29th is slightly higher than last year although the storage level at the beginning of the year is low. For Bhumibol Dam, the storage level is increasing as a consequence of higher rainfall in the northern region and is in the different trend comparing to last year.

Dam Storage Level (Pasak Dam, Kwaenoi Dam)

Storage level Pasak Dam (30%) 29 May 2022



Storage level Kwaenoi Dam (38%) 29 May 2022



The storage levels of both Kwaenoi Dam and Pasak Dam comparing to the beginning of the year are substantially lower. However, the storage levels are slightly higher than the last year.

The Upper Chao Phraya River Flow

The river level in Yom river is higher from the beginning of May, especially the river level at Phichit province. For, the river levels in Ping, Wang, and Nan river are not significantly changed from the beginning of May. The river level of the Chao Phraya River above the Chao Phraya Dam is also lower than the bank. Thus, there is no critical situation regarding flood event.

Water Situation in the Chao Phraya River

29th May 2022

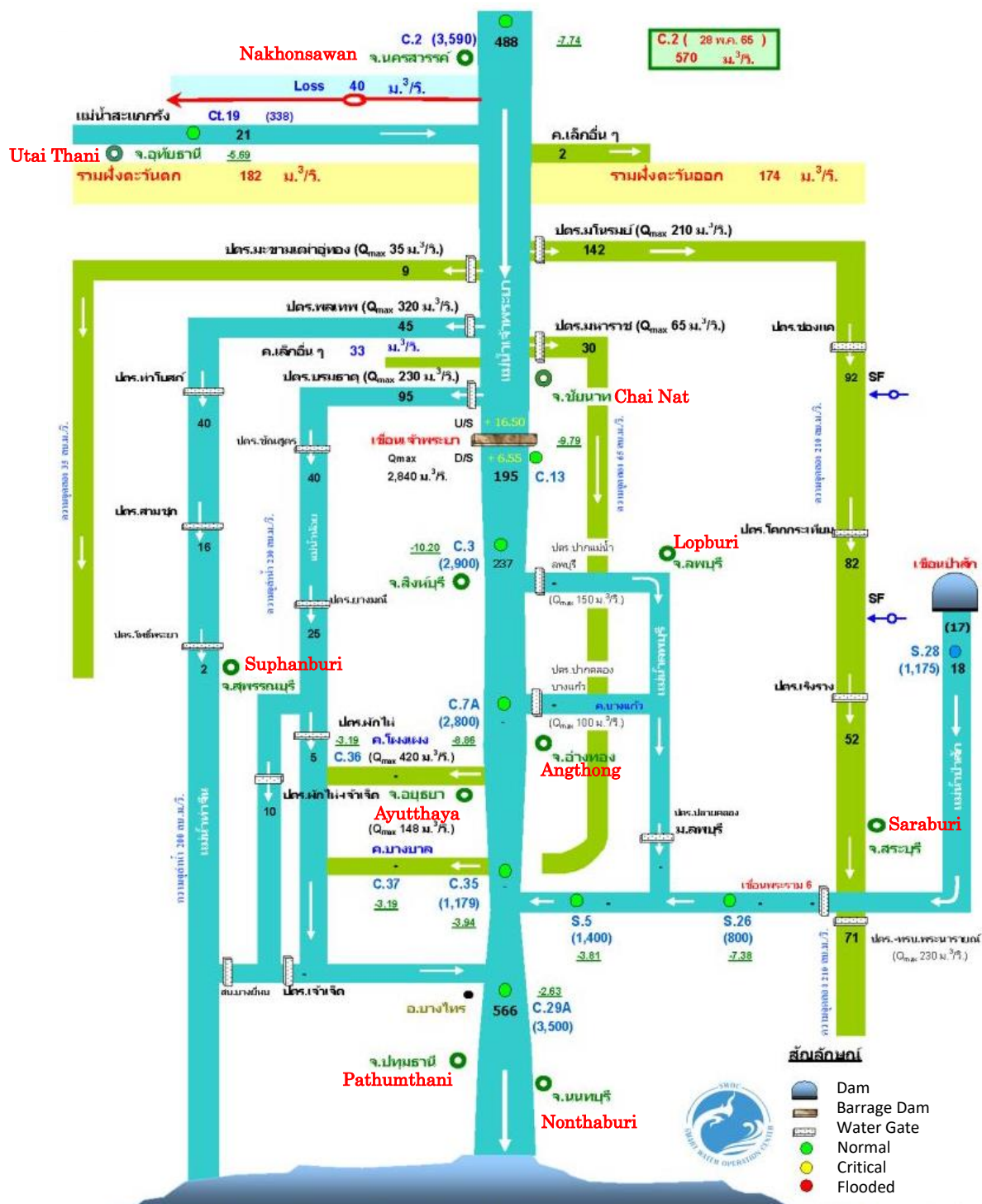


The Lower Chao Phraya River Flow

There is no significant change of river levels in the Lower Chao Phraya. The river level is clearly lower than the river bank. There is no notable situation.

Water Situation in the Chao Phraya River

29th May 2022



References

<http://www.arcims.tmd.go.th/dailydata/yearRain.php>

https://www.tmd.go.th/monthly_forecast.php

<https://www.thaiwater.net/water/dam/large>

http://water.rid.go.th/flood/plan_new/chaophaya/Chao_up.php?cal2=29052022

http://water.rid.go.th/flood/plan_new/chaophaya/Chao_low.php?cal2=29052022

MS&AD InterRisk Research & Consulting, Inc. is a MS&AD Insurance Group company specialized in risk management survey research and consulting services. For inquiry about consultation and seminar etc. for companies expanding business in Thailand, please feel free to contact the nearest Mitsui Sumitomo Insurance or Aioi Nissay Dowa Insurance sales representatives.

MS&AD InterRisk Research & Consulting, Inc.
International Section, Corporate Planning Department
TEL.03-5296-8920
<http://www.irric.co.jp>

InterRisk Asia (Thailand) is a MS&AD Insurance Group company which was established in Thailand to provide risk management services, such as fire safety, flood risk management, electrical safety and risk consulting services, such as automotive risk assessment, occupational safety and burglary risk survey to our clients in Thailand. For inquiry, please feel free to contact us.

InterRisk Asia (Thailand) Co., Ltd.
175 Sathorn City Tower, South Sathorn Road, Thungmahamek, Sathorn, Bangkok, 10120, Thailand
TEL: +66-(0)-2679-5276
FAX: +66-(0)-2679-5278
<http://www.interriskthai.co.th/>

The purpose of this report is to provide our customers with the useful information for the occupational safety and health management. There is no intention to criticize any individuals and parties etc.

Copyright 2022 MS&AD InterRisk Research & Consulting, Inc. All Rights Reserved